

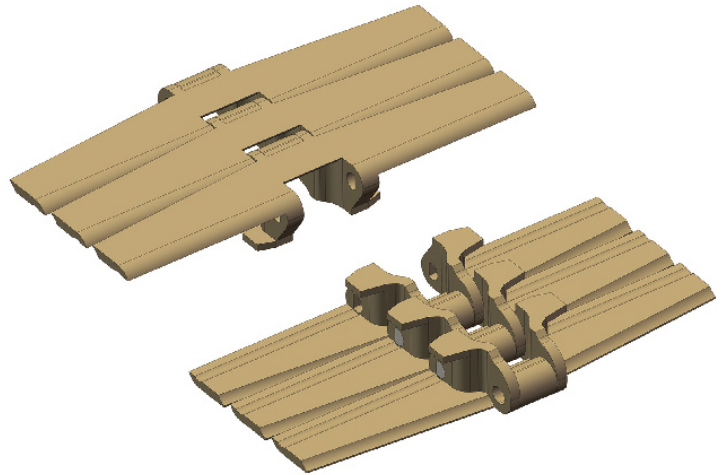
Har882TAB Series Curve

TOP CHAINS

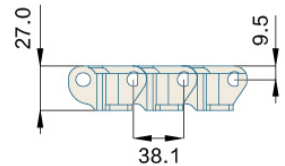
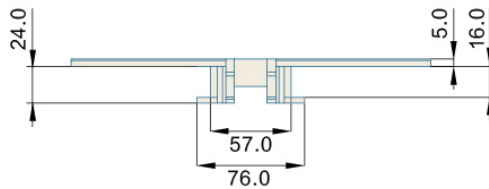
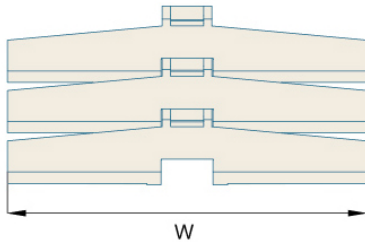
TOP CHAINS 882TAB

P=38.1mm, T=27mm

PIN:Stainless steel



节距 Pitch	链板材质 Material	颜色 Color
38.1mm	POM	咖啡色/Brown



型号 Type No.	宽度 Width (mm)	节距 Pitch (mm)	重量 Weight (Kg/m)	转弯半径 Radius (mm)	负载 Working Capacity (N)
Har882TAB-K375	95.2	38.1	1.40	510mm	3830
Har882TAB-K600	152.4	38.1	2.18	610mm	3830
Har882TAB-K750	190.5	38.1	2.34	610mm	3830
Har882TAB-K1000	254.0	38.1	2.75	610mm	3830
Har882TAB-K1200	304.8	38.1	3.20	610mm	3830

链轮 Sprocket	护栏 Guide	弯轨 Guide Rails	其余配件 Component
S19-S20	R01-R42	G04-G06	C01-C57